

MISSIONARY SHIRT and CARD

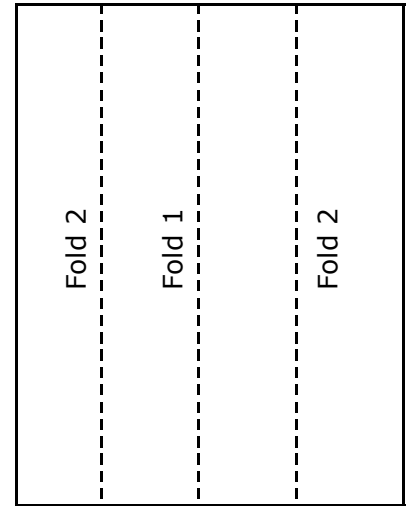
By Rachel Woods, LDS Guide, lds.about.com



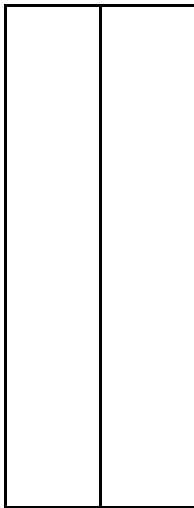
Take a regular 8 1/2 x 11 paper. Follow these instructions by folding at the dotted lines. It's okay if you have trouble making your first one, consider it your practice one, then try again! When the shirt is finished the back flap will open up, making the perfect place to write a note for a fun card.

For smaller shirts, use half a sheet: 4 1/4 x 5 1/2. **Note:** You can also use these cards for **Father's Day** or for **Home Teachers**, just don't add the missionary tag!

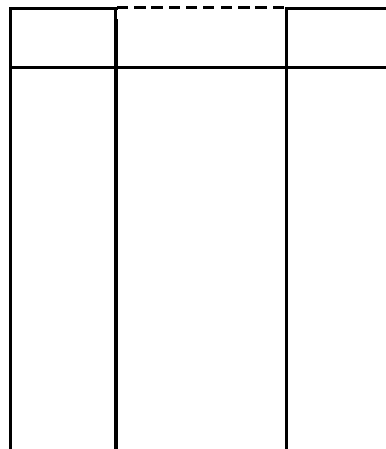
1. Fold in half, open, then fold in sides to middle fold



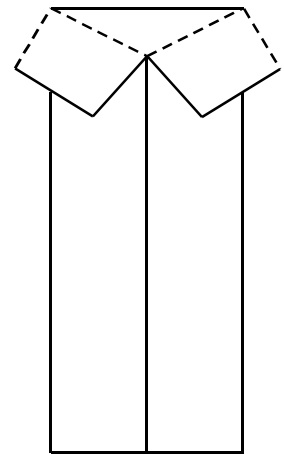
2. It should look like this, then open and turn over



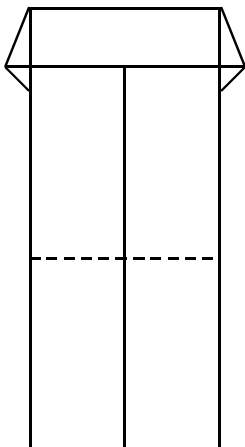
3. Fold down top by about 1 inch and **ONLY** crease between the two folds



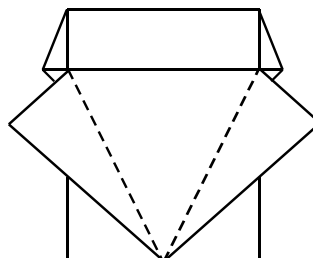
4. Turn over, close flaps, and fold down to make the collar by creasing flaps at an angle



5. Turn over again and fold up bottom to touch top fold



6. Fold out center flaps and crease to create sleeves



7. Turn over. Add a black missionary tag and a colorful tie. (You can draw/color them or make from construction paper.)

